

## Ready Mix Concrete (RMC) Plant Certification Scheme

In order to establish a credible, independent third party voluntary certification system to assure quality in operations and processes of RMC Plants, the **Quality Council of India**, India's apex quality facilitation body, set up by the Central Govt. has designed and launched the **"RMC Plant Certification Scheme"** in **May , 2013**.

The Scheme has been launched based on a request from the **Ready Mixed Concrete Manufacturer' Association (RMCMA)**, a non-profit industry organization of Ready Mix Concrete (RMC) producers in India, who realised the requirement of institutionalising neutral verification system to ensure quality in ready mix concrete manufacturing owing to the tremendous demand in concrete in the last decade. The Scheme has been developed under an MoU signed between both the organisations in December 2011. This joint initiative was further reinforced by joining hands with the **Building Materials & Technology Promotion Council (BMTPC)** under Ministry of Housing & Urban Poverty Alleviation, Government of India, as the secretariat for the work related to the certification criteria. .

This third party voluntary scheme is targeted towards large number of RMC facilities spread over the country providing them an opportunity for marketing a product which is an outcome of a process validated through a process of third party certification. This showcases their intent to serve their customers better not only by focussing on quality of the concrete but other aspects as stipulated in the Scheme.

The scheme is a robust mechanism that ensures that any RMC unit that applies for a certificate has actually internalised best practices in their plant in accordance with the BMTPC's **Criteria for Production Control of Ready Mix Concrete** which is specified in the Scheme. The important aspects that are assessed during the assessment include plant and equipment, concrete mix design, control on quality of concrete ingredients, control and maintenance of process, production and testing facilities and adequate emphasise on competence of key personnel manning the process.

A RMC unit may apply to showcase and benchmark itself with quality certifications for any of the two options available with the RMC Plants Certification Scheme, one being '**RMC Capability Certification**' and other being '**RMC 9000+ Capability Certification**', the latter ensuring compliance to the requirements of ISO 9001 also in addition to the BMTPC Criteria. The logo for the same are as under:



RMC Capability Certification

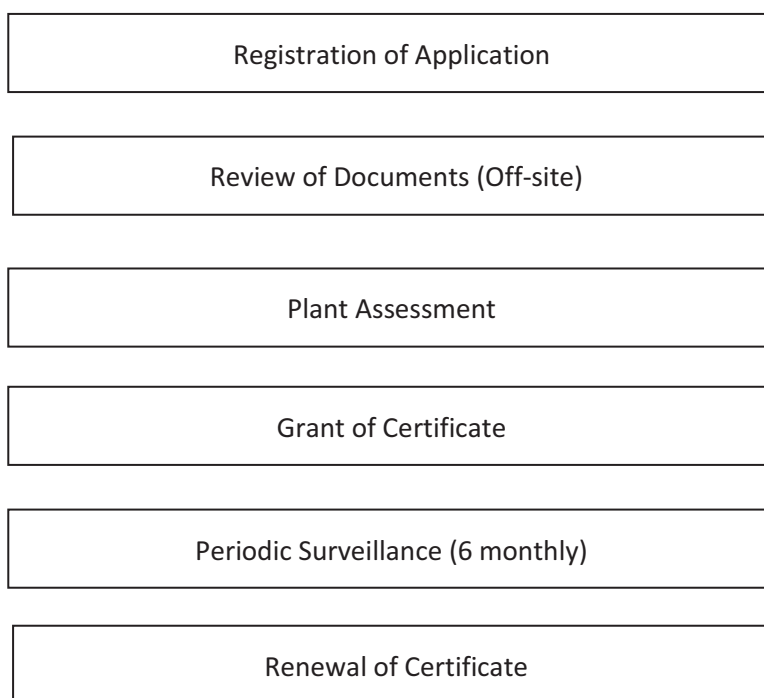


RMC 9000+ Capability Certification

RMC Plants under this QCI Scheme shall be certified by NABCB accredited Certification Bodies primarily complying with the requirements specified in the international standards, ISO/IEC 17065 and ISO/IEC 17021, as applicable, and the additional requirements prescribed by QCI.

Initially, NABCB accredited Certification Bodies having competence in cement/concrete sector for ISO 9000 certification will be granted provisional approval for a short period till they get formally accredited as required. At present there are 2 certification bodies have been granted provisional approval viz., BVCI and ICMQ.

The 6 step certification process includes:



For further information contact QCI at the address below:

Email: [rmcpcs@qcin.org](mailto:rmcpcs@qcin.org), [manish.pande@qcin.org](mailto:manish.pande@qcin.org)

Quality Council of India (QCI)  
2<sup>nd</sup> Floor, Institution of Engineers Building  
Bahadur Shah Zafar Marg,  
New Delhi - 110 002 India

Tel: +91 11 2337 8056/ 57

Fax: +91 11 2337 9621

Web: [www.qcin.org](http://www.qcin.org)